



Company : Overseas Energy Holdings Ltd

Well : Westwood 1

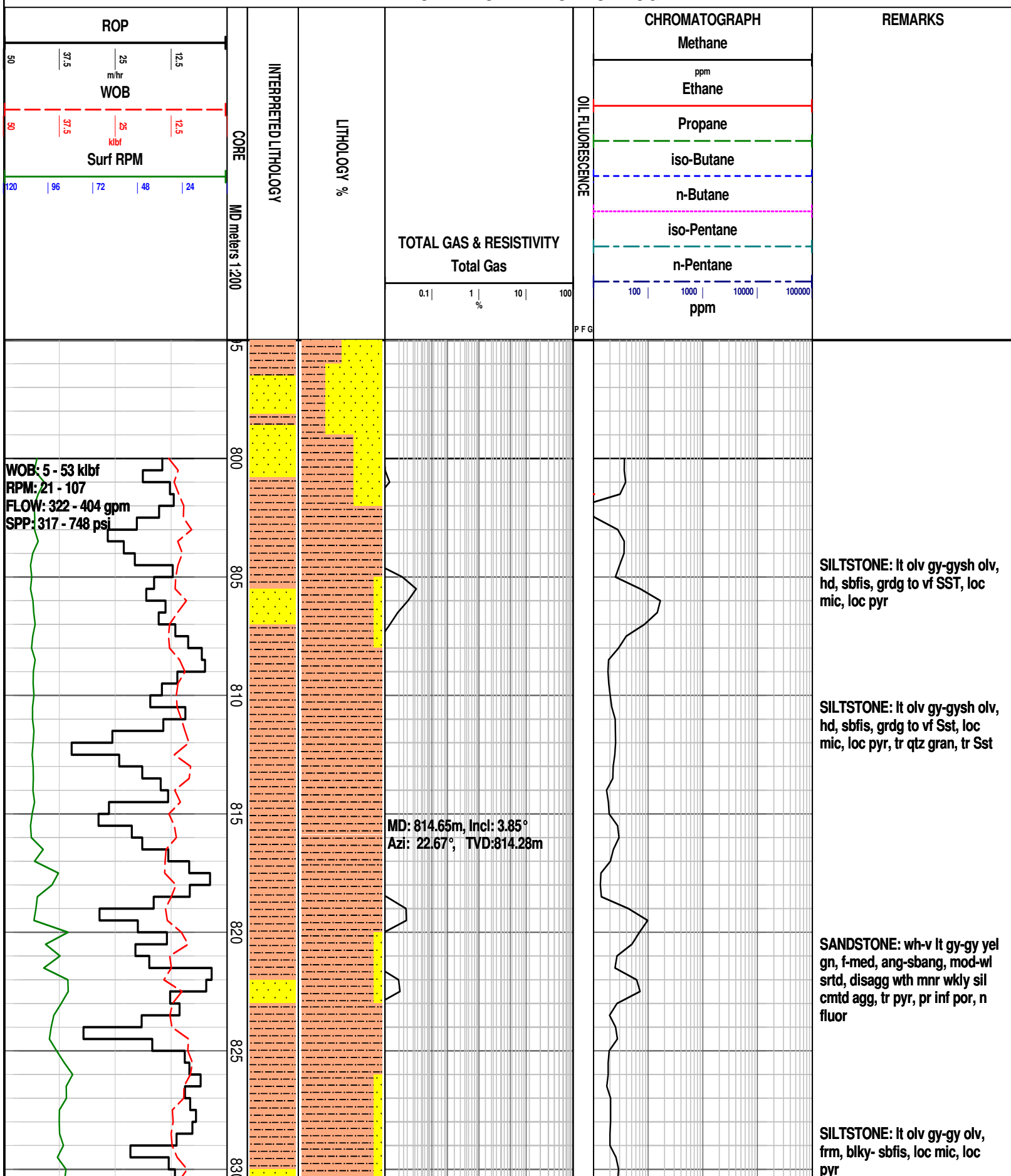
Interval : 795.00 - 1131.64 meters

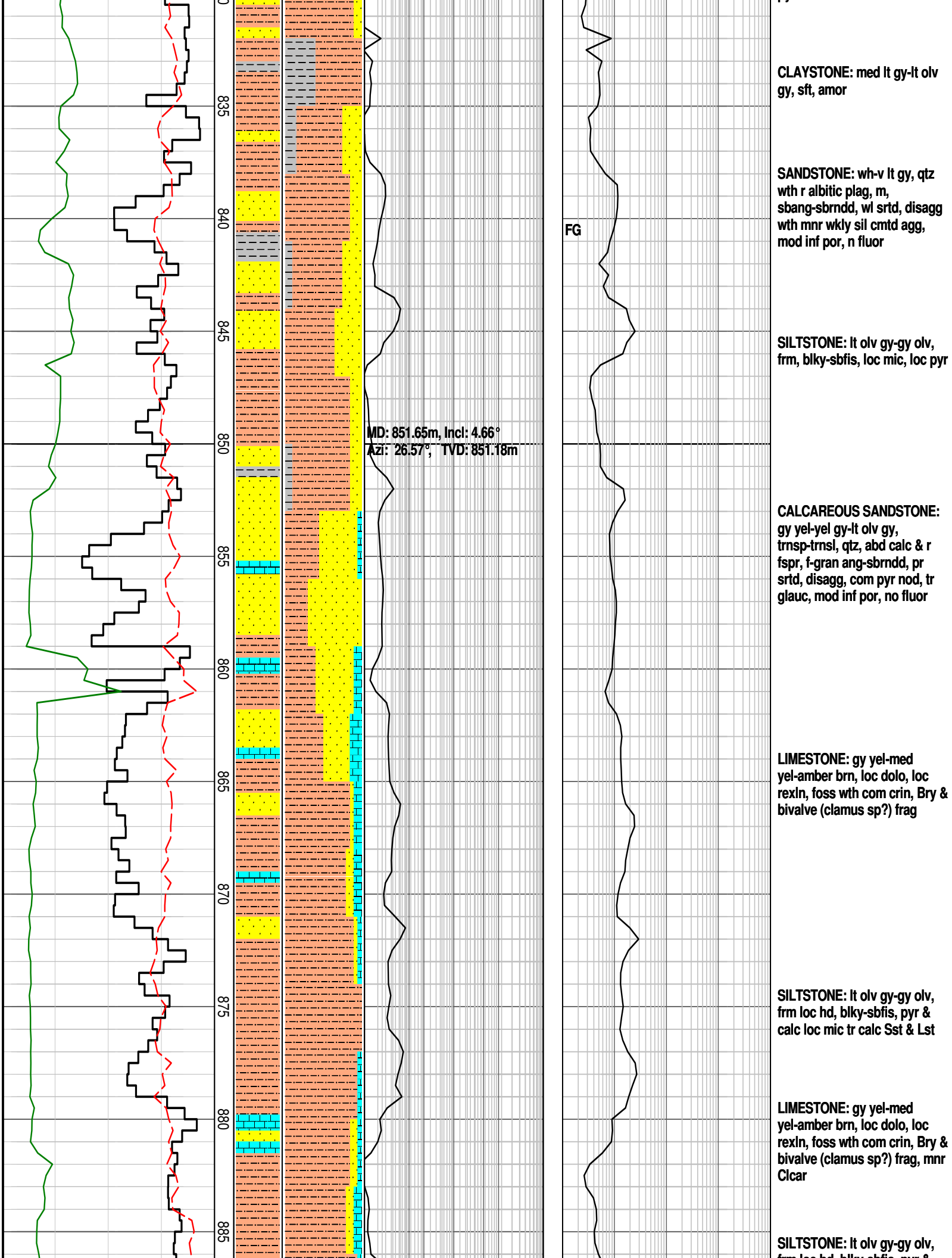
Created : 15/Dec/2009 1:34:01 PM

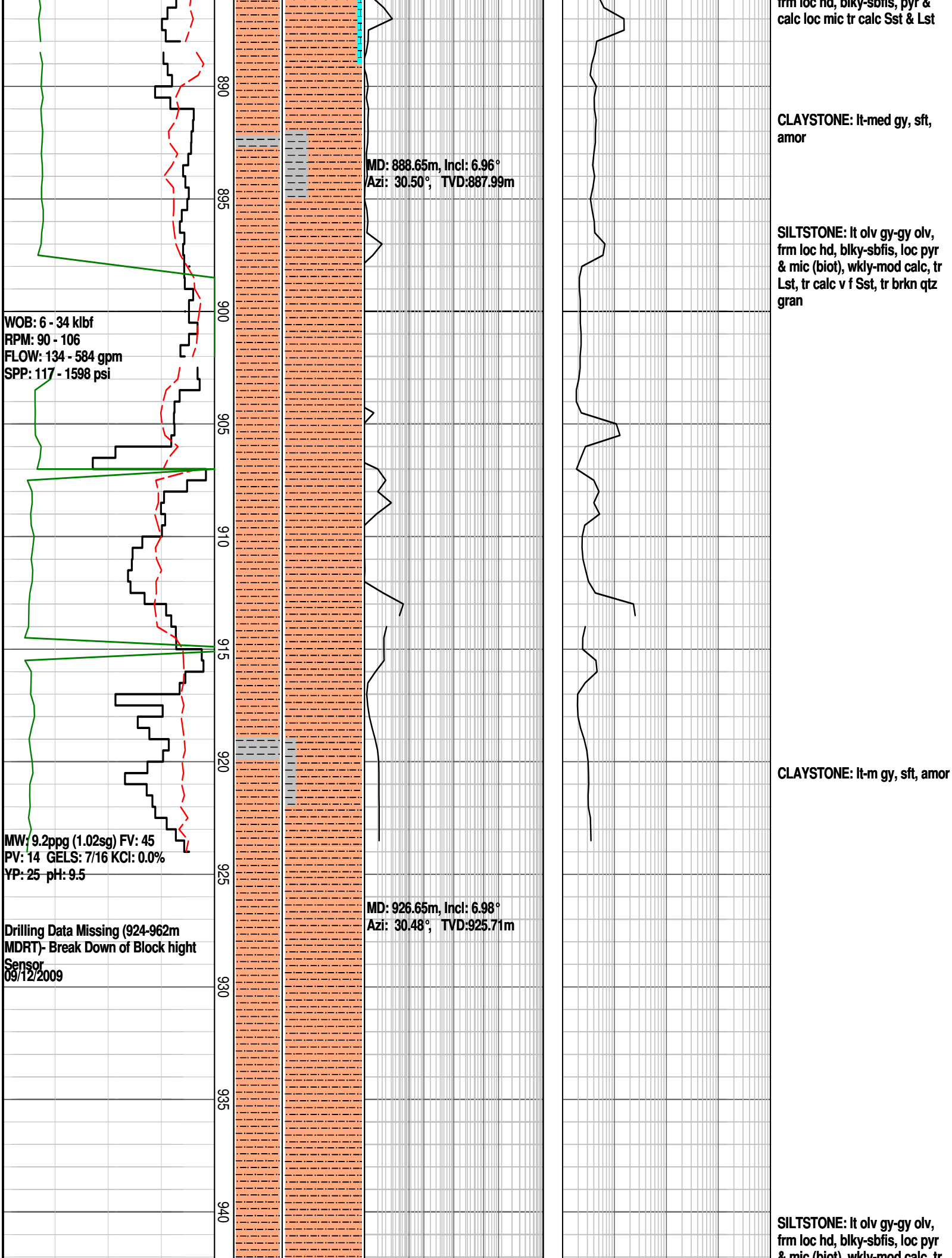
OEH
OVERSEAS ENERGY HOLDINGS LTD

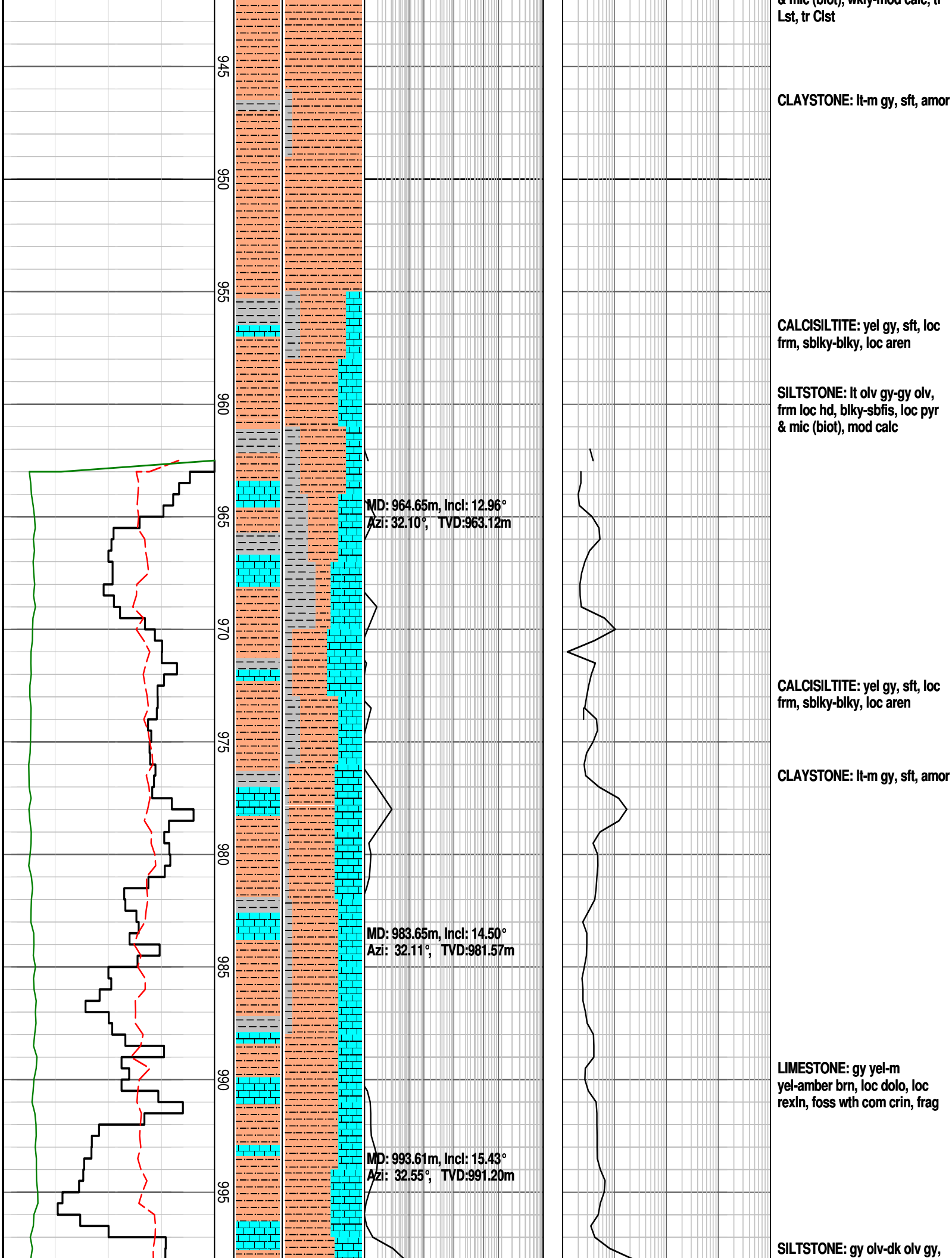
INTEQ

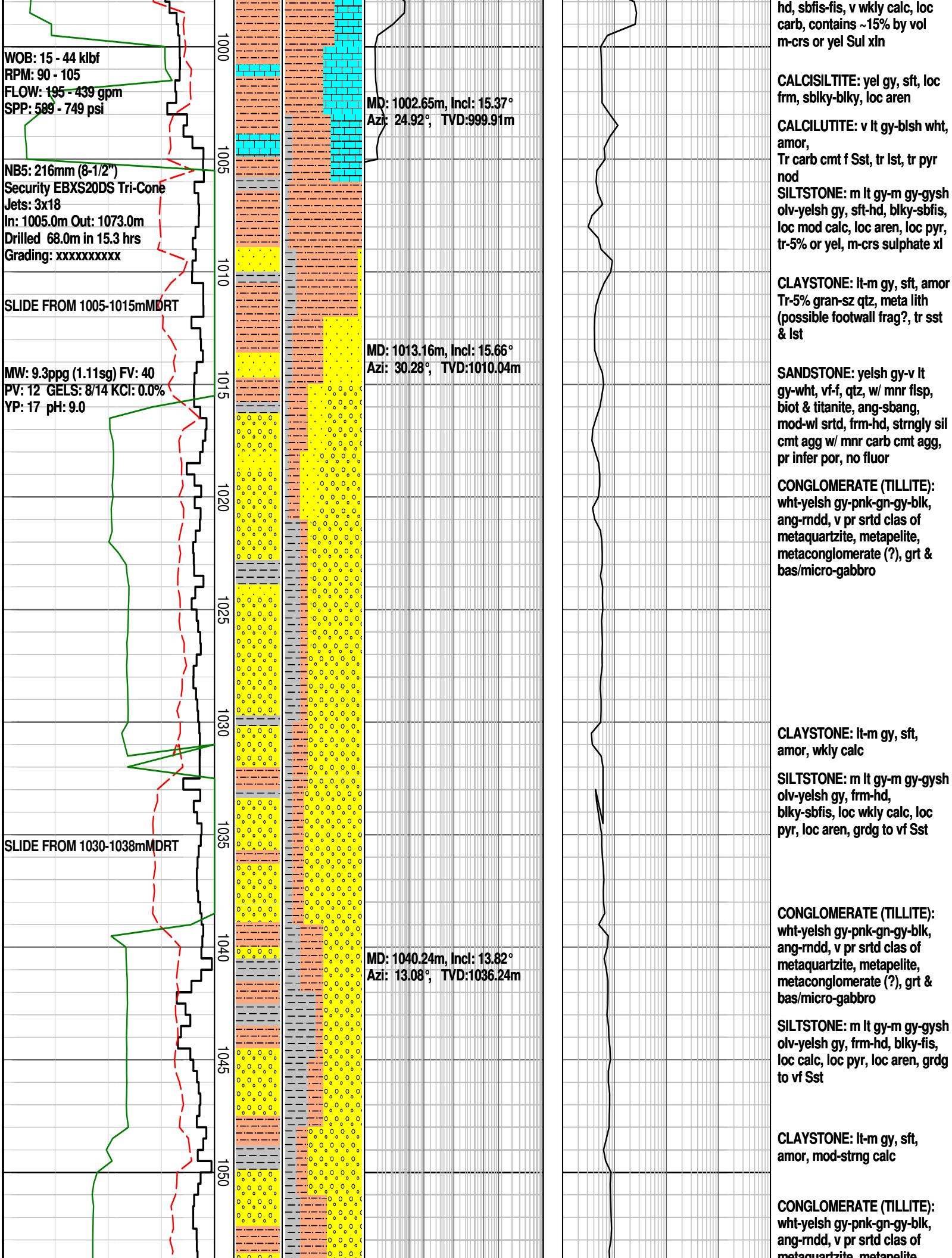
FORMATION EVALUATION LOG

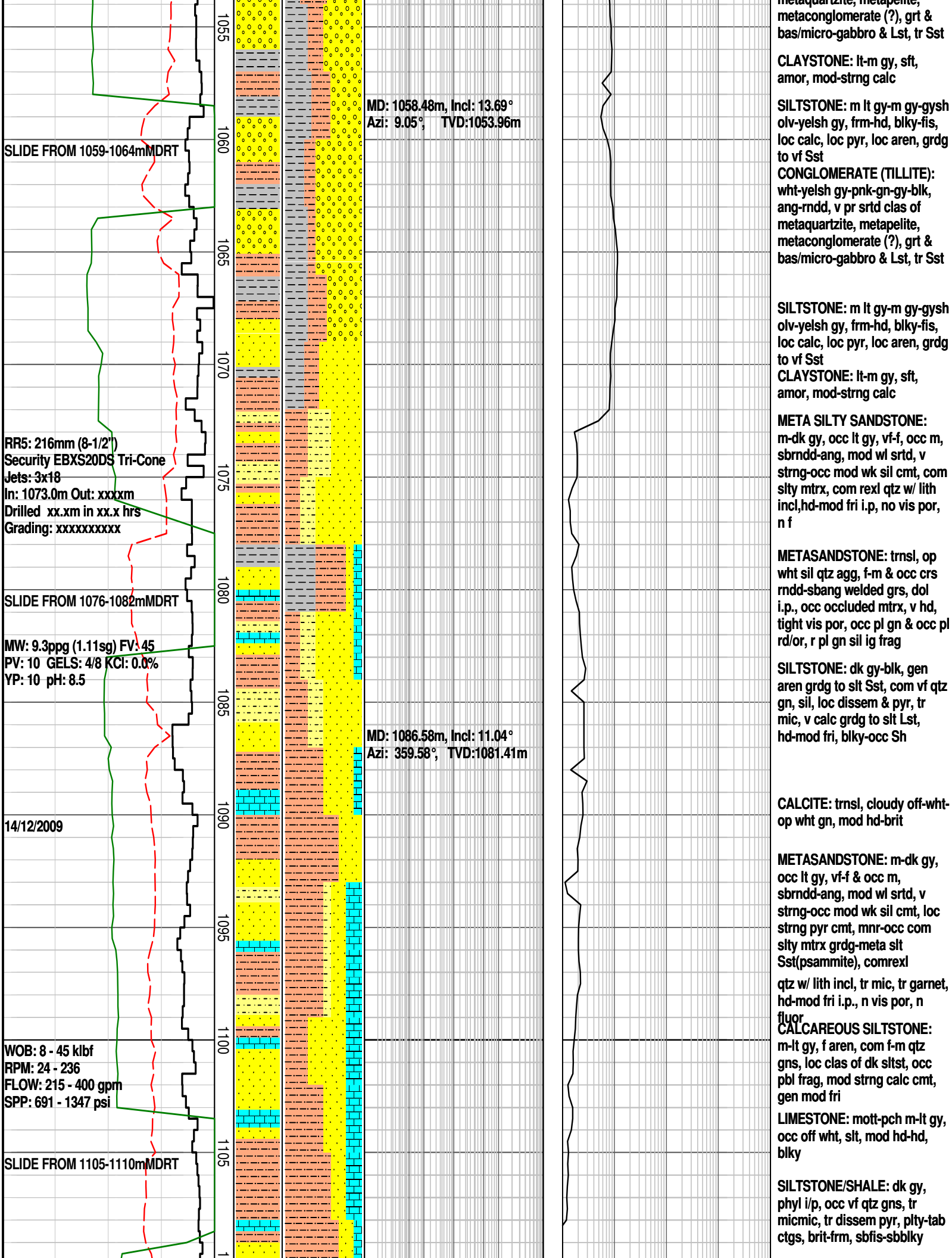


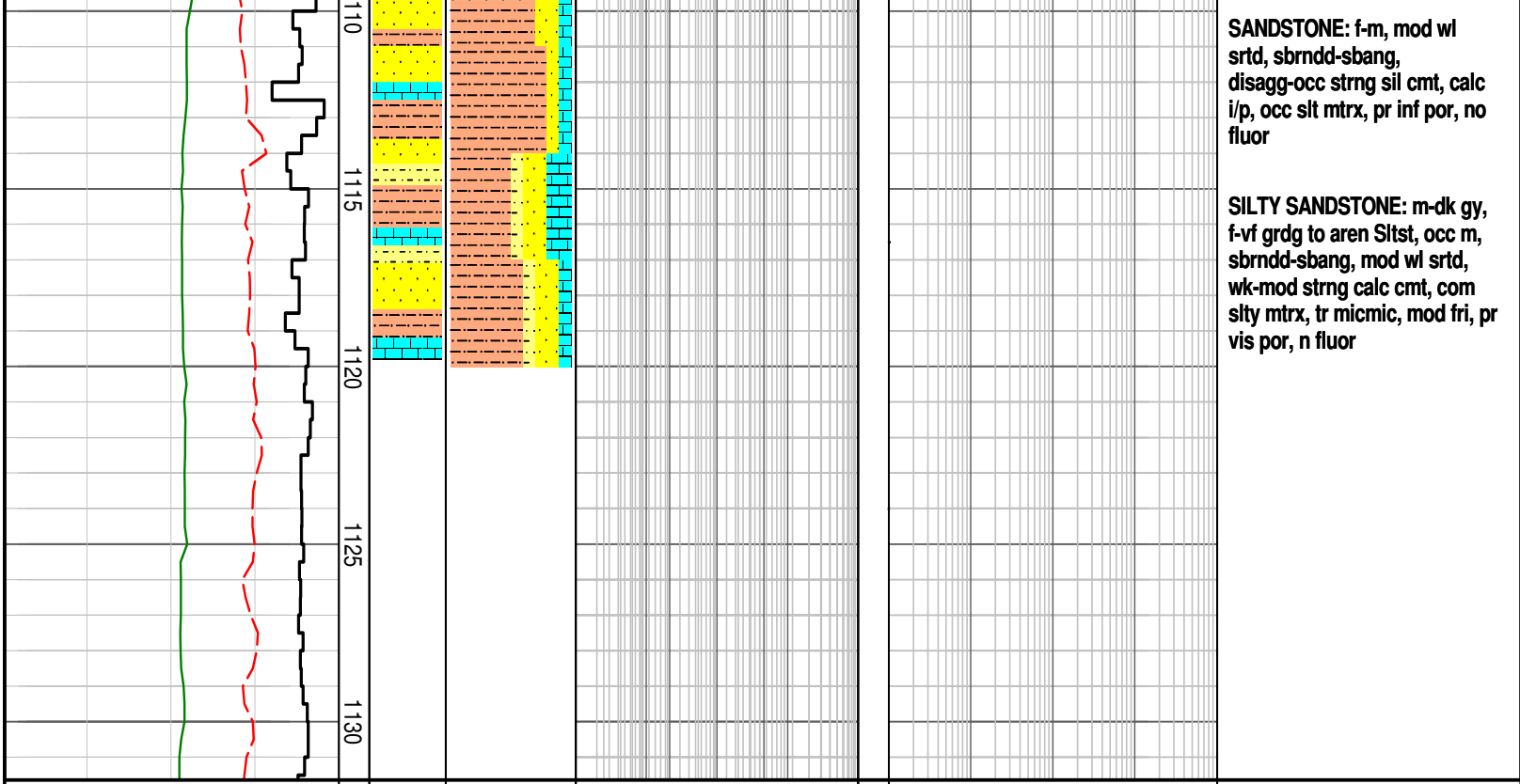












SANDSTONE: f-m, mod wl
srtd, sbrndd-sbang,
disagg-occ strng sil cmt, calc
i/p, occ slt mtrx, pr inf por, no
fluor

SILTY SANDSTONE: m-dk gy,
f-vf grdg to aren Sltst, occ m,
sbrndd-sbang, mod wl srtd,
wk-mod strng calc cmt, com
silty mtrx, tr micmic, mod fri, pr
vis por, n fluor

FORMATION EVALUATION LOG

FORMATION EVALUATION LOG							REMARKS
ROP m/hr WOB klbf Surf RPM	CORE MD meters 1:200	INTERPRETED LITHOLOGY	LITHOLOGY %	TOTAL GAS & RESISTIVITY Total Gas	OIL FLUORESCENCE P F G	CHROMATOGRAPH	
						Methane	
37.5	12.5					ppm Ethane	
37.5	12.5					Propane	
						iso-Butane	
						n-Butane	
						iso-Pentane	
						n-Pentane	
120	96	72	48	24		ppm	